

S2DGHC-108 400W-410W Monofacial



LED Expert, LTD
www.ledexpert.in.ua



More than 30 years of experience in the manufacturing industry. PV chain including silicon materials, wafer, solar glass, solar cell, solar module and solar project.



Solar modules certified by TUV and CQC in the extreme conditions.



The good weak light performance (morning, evening and cloudy days) has been tested and approved by professional third-party.



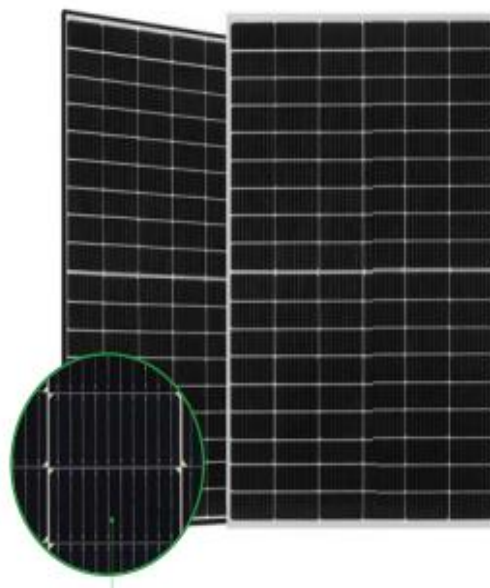
Guarantee from 0 to +6W as power tolerance conventional output.



100% EL test before and after lamination, and finished products EL test, providing higher quality assurance.



Pass TÜV Salt Mist Corrosion Test, PID Test, Ammonia Resistance Test, Carbon Footprint Test, Fire Test, Sand Test, EMC and LVD Test.



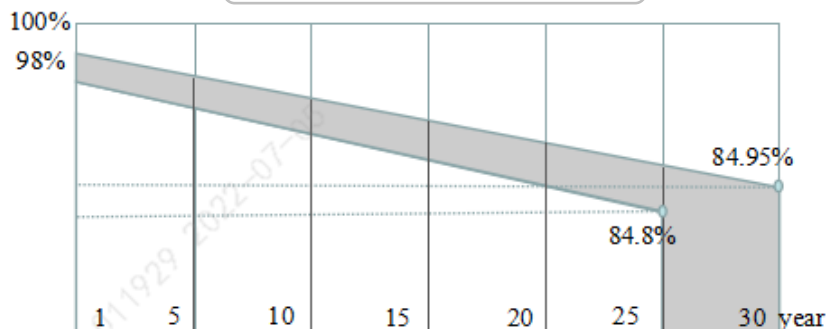
High Efficiency
PERC Mono-Crystalline Solar Module

Comprehensive Certificates

- IEC61215(2016), IEC61730(2016)
- ISO9001: 2015 Quality Management System
- ISO14001:2015 Environment Management System
- ISO45001: 2018 Occupation Health Safety Management System



Superior Warranty



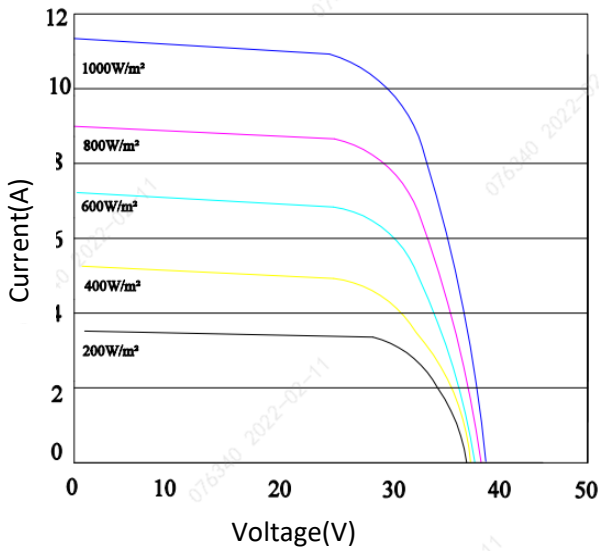
- Perc doubles glass Mono-Module linear warranty
- Perc Mono-Module linear warranty

- 12 years product warranty .
- 25 years performance warranty + 0.55% Annual Degradation for Perc Mono-Module.
- 30 years performance warranty + 0.45% Annual Degradation for Perc doubles glass Mono-Module.

S2DGHC-108 400W-410W Monofacial

LED Expert, LTD
www.ledexpert.in.ua

I-V Curves

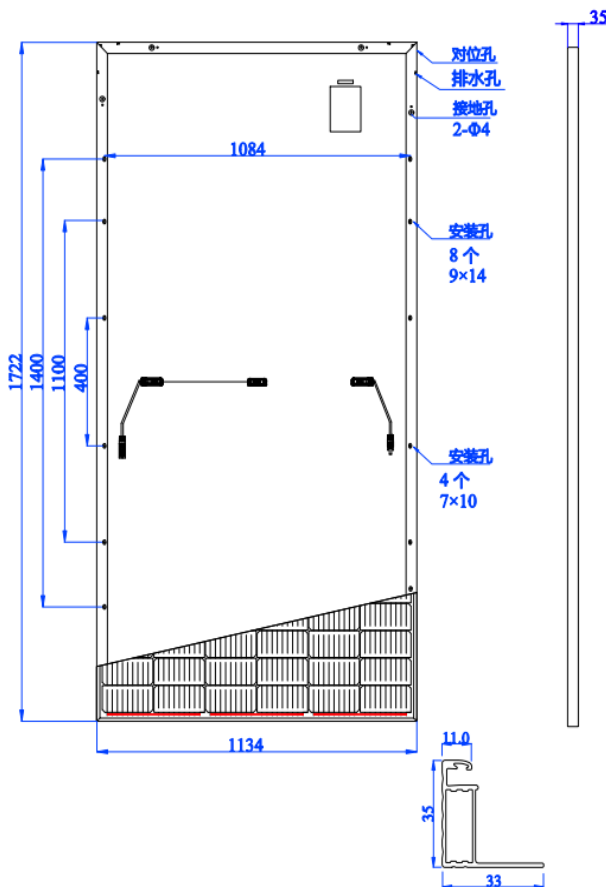


ELECTRICAL SPECIFICATION (STC)

Max-power	405	410	415
Power Tolerance	0~+6W		
Voltage at Pmax (Vmp)	30,93	31,04	31,20
Current at Pmax (Imp)	13,10	13,21	13,30
Open-Circuit Voltage(Voc)	37,09	37,19	37,29
Short-Circuit Current (Isc)	13,98	14,07	14,16
Module Efficiency(%)	20,70	20,90	21,20
No. of Bypass Diodes(pcs.)	3		
Max. Series Fuse(A)	25A		
Operating Temperature	- 45~+85 °C		
Max Static Load	5400P		
Max-System Voltage(VDC)	1500 VDC(IEC)		
Fire Rating	Class C		

STC: Irradiance 1000W/m², Cell Temperature 25 °C, Air Mass 1.5

Dimension(mm)



MECHANICAL SPECIFICATION

Solar cells	Mono Crystalline 182x91 mm
	108 Cell (6x18) — 10BB
Module Dimension(mm)	1722x1134x35
Weight	22.0 kg
Front Glass	2.0mm High Transmission.LowIron Tempered Glass
Construction Encapsulation: EVA	EVA /POE
Back Sheet	white
Junction Box	IP68 Rated
Connector	MC4/MC4 equivalent
Calble	Φ=4mm ² , L=300±5mm

TEMPERATURE COEFFIAIENT

Temperature Coefficient of Pmax	-0.35%/°C
Temperature Coefficient of Voc	-0.270%/°C
Temperature Coefficient of Isc	0.048%/°C

PAKAGING CONFIGURATION

Modules Per box	31 pieces
Modules per container	930 pcs/40HQ
Modules per	868pcs/13.5m, 1178pcs/17.5m